

# XCRA51

Limit switch, Limit switches XC Standard, XCR, metal spring return rod lever square rod 6 mm, 2X(1NC+NO)



## Main

|   |   |
|---|---|
| Range of product                              | OsiSense XC   |
| Series name                                   | Special format  |
| Product or component type                     | Limit switch  |
| Product specific application                  | For hoisting and mechanical handling applications                           |
| Device short name                             | XCR   |
| Sensor design                                 | -   |
| Body type                                     | Fixed   |
| Head type                                     | Rotary head   |
| Material                                      | Metal   |
| Fixing mode                                   | By the body   |
| Movement of operating head                    | Rotary  |
| Type of operator                              | Spring return rod lever metal square rod 6 mm                               |
| Type of approach                              | Lateral approach, 2 directions  |
| Electrical connection                         | Screw-clamp terminals, clamping capacity: 1 x 0.5...2 x 2.5 mm <sup>2</sup> |
| Number of poles                               | 4   |
| Contacts type and composition                 | 2 x (1 NC + 1 NO)   |
| Contact operation                             | Slow-break, break before make   |
| Contact block per direction [control circuit] | 2 per direction   |
| Positive opening                              | With  |

## Complementary

|  |  |
|--|--|
| Body material                          | Zinc alloy   |
| Switch actuation                       | By any moving part   |
| Cable entry                            | 1 entry tapped for Pg 13.5 cable gland, cable outer diameter: 9...12 mm conforming to NF C 68-300  |
| Contacts insulation form               | Zb   |
| Number of steps                        | 1  |
| Positive opening minimum torque        | 0.75 N.m   |
| Minimum torque for tripping            | 0.45 N.m   |
| Minimum actuation speed                | 6 m/min  |
| Maximum actuation speed                | 1.5 m/s  |
| Maximum displacement angle             | -55 °<br>55 °  |
| Contact code designation               | A300, AC-15 (Ue = 240 V), Ie = 3 A conforming to EN/IEC 60947-5-1 appendix A<br>Q300, DC-13 (Ue = 250 V), Ie = 0.27 A conforming to EN/IEC 60947-5-1 appendix A                |
| [Ui] rated insulation voltage          | 300 V conforming to UL 508<br>500 V (pollution degree 3) conforming to IEC 60947-1<br>500 V (pollution degree 3) conforming to VDE 0110<br>300 V conforming to CSA C22.2 No 14 |
| Maximum resistance across terminals    | 25 MOhm conforming to IEC 60255-7 category 3   |
| [Uimp] rated impulse withstand voltage | 6 kV IEC 60664<br>6 kV IEC 60947-1   |
| Short-circuit protection               | 10 A cartridge fuse, type gG   |

|                               |   |
|-------------------------------|---|
| Electrical durability         | 5000000 Cycles, DC-13, inductive load type, 120 V, 4 W, operating rate <60 cyc/mn, load factor: 0.5 conforming to IEC 60947-5-1 appendix C<br>5000000 Cycles, DC-13, inductive load type, 24 V, 7 W, operating rate <60 cyc/mn, load factor: 0.5 conforming to IEC 60947-5-1 appendix C<br>5000000 cycles, DC-13, inductive load type, 48 V, 10 W, operating rate <60 cyc/mn, load factor: 0.5 conforming to IEC 60947-5-1 appendix C |
| Mechanical durability         | 10000000 cycles   |
| Width                         | 85 mm   |
| Height                        | 95 mm   |
| Depth                         | 75 mm   |
| Net weight                    | 1.11 kg   |
| Terminals description ISO n°1 | (13-14)NO<br>(21-22)NC  |



## Environment

|                                       |  |
|---------------------------------------|--|
| Shock resistance                      | 68 gn conforming to IEC 60068-2-27   |
| Vibration resistance                  | 9 gn (f= 10...500 Hz) conforming to IEC 60068-2-6  |
| IP degree of protection               | IP54 conforming to IEC 60529   |
| Overvoltage category                  | Class I conforming to IEC 61140<br>Class I conforming to NF C 20-030                         |
| Ambient air temperature for operation | -25...70 °C  |
| Ambient air temperature for storage   | -40...70 °C  |
| Protective treatment                  | TC   |
| Product certifications                | CCC<br>CSA   |
| Standards                             | CSA C22.2 No 14<br>IEC 60204-1<br>NF C 79-130<br>EN 60947-5-1<br>EN 60204-1<br>IEC 60947-5-1 |

## Packing Units

|                              |          |
|------------------------------|----------|
| Unit Type of Package 1       | PCE      |
| Number of Units in Package 1 | 1        |
| Package 1 Weight             | 1.044 kg |
| Package 1 Height             | 8 cm     |
| Package 1 width              | 10.5 cm  |
| Package 1 Length             | 20.5 cm  |

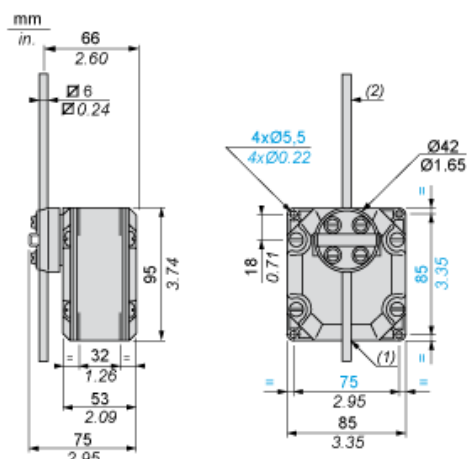
## Offer Sustainability

|                          |   |
|--------------------------|---|
| REACH Regulation         | <a href="#"> REACH Declaration</a>             |
| EU RoHS Directive        | Not applicable, out of EU RoHS legal scope  |
| Environmental Disclosure | <a href="#"> Product Environmental Profile</a> |

## Contractual warranty

|          |           |
|----------|-----------|
| Warranty | 18 months |
|----------|-----------|

## Dimensions



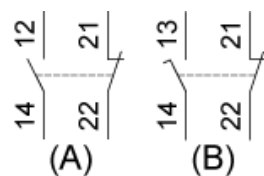
- (1) 1 tapped entry for n° 13 cable gland.  
(2) Rod length: 200 mm.

---

## Wiring Diagram

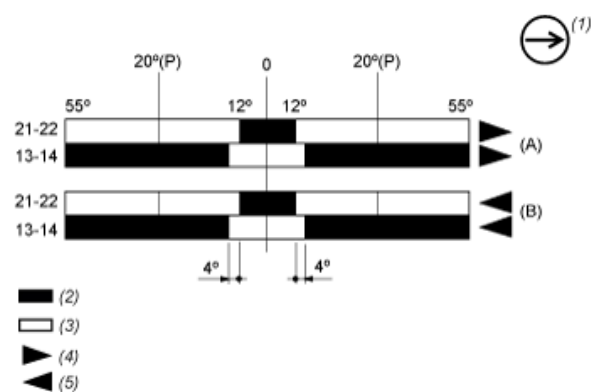
---

Two 2-pole NC + NO Break Before Make, Slow Break



- (A) 1<sup>st</sup> contact  
(B) 2<sup>nd</sup> contact

## Functionnal Diagram



- (P) Positive opening point
- (A) 1st contact
- (B) 2nd contact
- (1) NC contact with positive opening operation
- (2) Closed
- (3) Open
- (4) Tripping
- (5) Resetting