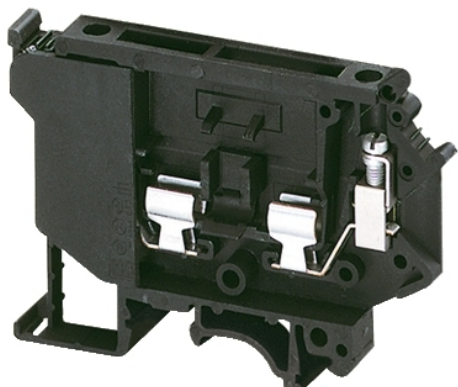


NSYTRV42SF5LD

SCREW TERMINAL, FUSED, FOR 5X20/25/30MM FUSE, WITH LED 12-30V, 2PTS,



Main

Range	Lineryg
Product name	Lineryg TR
Product or component type	Terminal block
Device short name	TRV
Terminal block type	Fused disconnect
Terminal block level	1
Mounting mode	Clip-on
Nominal cross section	4 mm ²
Length	72.5 mm
Colour	Black
Quantity per set	Set of 50

Complementary

Fuse size	5 x 20 mm
Width	8.2 mm
Height	56.5 mm
Connections - terminals	1 x screw terminal: upstream 1 x screw terminal: downstream
Number of connections	2
Connection position	Sideways
Number of measurement input	0
Cable cross section	0.2...4 Mm ² , flexible without cable end 0.2...4 mm ² , solid
Tightening torque	0.5...0.8 N.m
Wire stripping length	8 mm
Tool type	Connection: screwdriver Disconnection: screwdriver
[Ue] rated operational voltage	500 V conforming to EN/IEC 60947-7-1 600 V cURus 600 V CSA
[In] rated current	6.3 A conforming to EN/IEC 60947-7-1 12 A cURus 6.3 A CSA
Material	Polyamide 6/6: insulating case
Dielectric loss	0.01 at 1 MHz conforming to IEC 60250 0.01 at 1 MHz conforming to VDE 0303-T4
Dielectric constant	3.7 at 1 MHz
Resistivity	10000 MΩ.M conforming to IEC 60093 10000 MΩ.m conforming to VDE 0303-T30
Surface resistance	1000 GΩ conforming to IEC 60093 1000 GΩ conforming to VDE 0303-T30
Creep resistance	500 CTI (> 400 kB) conforming to IEC 60093 500 CTI (> 400 kB) conforming to VDE 0303-T30
Flame retardance	V0, thickness 0.8 mm conforming to UL 94
Net weight	20 g
Provided equipment	12...30 V light indicator

The information provided in this documentation contains general descriptions and/or technical characteristics of the performance of the products contained herein. This documentation is not intended as a substitute for and is not to be used for determining suitability or reliability of these products for specific user applications. It is the duty of any such user or integrator to perform the appropriate and complete risk analysis, evaluation and testing of the products with respect to the relevant specific application or use thereof. Neither Schneider Electric Industries SAS nor any of its affiliates or subsidiaries shall be responsible or liable for misuse of the information contained herein.

Range compatibility	Prisma G Prisma P Prisma PH Prisma Pack Spacial Kaedra Pragma TeSys
Product compatibility	Spacial enclosures

Environment

Product certifications	EAC CSA CURus
Dielectric strength	1000 V conforming to IEC 60243-1
Ambient air temperature for operation	-40...130 °C conforming to IEC 60216-1 -40...130 °C conforming to VDE 0304-T21

Packing Units

Unit Type of Package 1	PCE
Number of Units in Package 1	1
Package 1 Weight	20 g
Package 1 Height	6.5 cm
Package 1 width	11.5 cm
Package 1 Length	31 cm
Unit Type of Package 2	BB1
Number of Units in Package 2	50
Package 2 Weight	1.5 kg
Package 2 Height	6.5 cm
Package 2 width	11.5 cm
Package 2 Length	31 cm
Unit Type of Package 3	S03
Number of Units in Package 3	400
Package 3 Weight	8.534 kg
Package 3 Height	30 cm
Package 3 width	30 cm
Package 3 Length	40 cm

Offer Sustainability

Sustainable offer status	Green Premium product
REACH Regulation	REACH Declaration
EU RoHS Directive	Pro-active compliance (Product out of EU RoHS legal scope) EU RoHS Declaration
Mercury free	Yes
RoHS exemption information	Yes
China RoHS Regulation	China RoHS Declaration
Environmental Disclosure	Product Environmental Profile
Halogen content performance	Halogen free plastic parts product

Contractual warranty

Warranty	18 months
----------	-----------