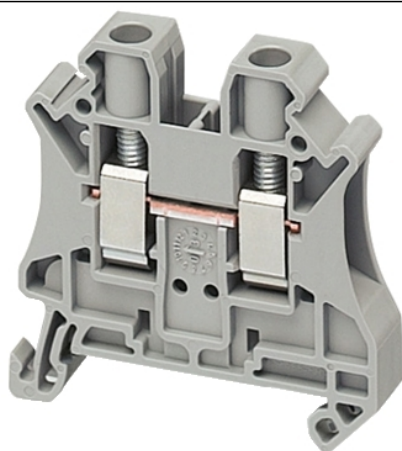


# NSYTRV62

## SCREW TERMINAL, FEED THROUGH, 2 POINTS, 6MM<sup>2</sup>, GREY



### Main

Range	Lineryg
Product name	Lineryg TR
Product or component type	Terminal block
Device short name	TRV
Accessory / separate part category	Connection accessory
Terminal block type	Passthrough
Terminal block level	1
Mounting mode	Clip-on
Nominal cross section	6 mm <sup>2</sup>
Length	47.7 mm
Colour	Grey
Quantity per set	Set of 50

### Complementary

Width	8.2 mm
Height	47.5 mm
Connections - terminals	1 x screw terminal: upstream (M4) 1 x screw terminal: downstream (M4)
Number of connections	2
Connection position	Sideways
Number of measurement input	2
Cable cross section	0.2...10 Mm <sup>2</sup> , solid cable with cable end 0.2...6 Mm <sup>2</sup> , flexible cable with cable end 0.2...10 Mm <sup>2</sup> , solid cable without cable end 0.2...10 mm <sup>2</sup> , flexible cable without cable end
Tightening torque	1.5...1.8 N.m
Wire stripping length	10 mm
Tool type	Connection: screwdriver Disconnection: screwdriver
[Ue] rated operational voltage	1000 V conforming to EN/IEC 60947-7-1 600 V CSA 690 V conforming to ATEX Exe II Ex II 2 GD 600 V cURus
[In] rated current	41 A conforming to EN/IEC 60947-7-1 50 A cURus 50 A CSA 40 A conforming to ATEX Exe II Ex II 2 GD
Material	Polyamide 6/6: insulating case Copper alloy: connector and screw Copper alloy: commoning link Chromium-nickel steel: spring
Dielectric loss	0.01 at 1 MHz conforming to IEC 60250 0.01 at 1 MHz conforming to VDE 0303-T4
Dielectric constant	3.7 at 1 MHz
Resistivity	10000 MΩ.M conforming to IEC 60093 10000 MΩ.m conforming to VDE 0303-T30
Surface resistance	1000 GΩ conforming to IEC 60093 1000 GΩ conforming to VDE 0303-T30
Creep resistance	500 CTI (> 400 kV) conforming to IEC 60093 500 CTI (> 400 kV) conforming to VDE 0303-T30

Flame retardance	V0, thickness 0.8 mm conforming to UL 94
Net weight	13.95 g
Range compatibility	Prisma G Prisma P Prisma PH Prisma Pack Spacial Kaedra Pragma TeSys
Product compatibility	Spacial enclosures

## Environment

Product certifications	ATEX LR VDE GL DNV CSA CURus EAC IEC-Ex
Dielectric strength	1000 V conforming to IEC 60243-1
Ambient air temperature for operation	-40...130 °C conforming to IEC 60216-1 -40...130 °C conforming to VDE 0304-T21

## Packing Units

Unit Type of Package 1	PCE
Number of Units in Package 1	1
Package 1 Weight	14 g
Package 1 Height	5 cm
Package 1 width	10.2 cm
Package 1 Length	21.4 cm
Unit Type of Package 2	CAR
Number of Units in Package 2	50
Package 2 Weight	730 g
Package 2 Height	5.2 cm
Package 2 width	10.5 cm
Package 2 Length	21.5 cm
Unit Type of Package 3	BB1
Number of Units in Package 3	50
Package 3 Weight	730 g
Package 3 Height	5.2 cm
Package 3 width	10.5 cm
Package 3 Length	21.5 cm

## Offer Sustainability

Sustainable offer status	Green Premium product
REACH Regulation	 <a href="#">REACH Declaration</a>
EU RoHS Directive	Compliant  <a href="#">EU RoHS Declaration</a>
Mercury free	Yes
RoHS exemption information	 <a href="#">Yes</a>
China RoHS Regulation	 <a href="#">China RoHS Declaration</a>
Environmental Disclosure	 <a href="#">Product Environmental Profile</a>
WEEE	The product must be disposed on European Union markets following specific waste collection and never end up in rubbish bins
Halogen content performance	Halogen free plastic parts product

## Contractual warranty

---

Warranty	18 months
----------	-----------

---